



DIVERSIFIED FARMER

[What's INSIDE]
 Ag in the ClassroomPage 4
 Prime Time Travelers Calendar..Page 5
 Meat Bundles.....Page 5

Celebrating Over 100 Years!

OFFICIAL PUBLICATION OF THE LAKE COUNTY FARM BUREAU

VOLUME 97 • NO. 1

GRAYSLAKE, ILLINOIS

WWW.LCFB.COM

FEB./MARCH 2018

Koeppen Marks 20 Years



The Lake County Farm Bureau would like to recognize and congratulate Executive Director Gregory Koeppen on his upcoming 20th anniversary with Lake County Farm Bureau.

Koeppen was hired as the Information Director in March 1998 and assumed his current role in January 2005 upon the retirement of his predecessor Richard Raftis.

Over the years, Greg has been a voice for the organization at the county, state and national levels and he's built a strong working relationship with elected and appointed officials. "I always tell people I have one of the best jobs in agriculture. Not only do I get to represent over 12,000 members in Lake County, but I get to see the impact of our work at the local, state and national lev-

els," says Koeppen.

Greg grew up on the Koeppen family vegetable farm in Wheeling, IL where he and his brother operated the family's roadside vegetable and pumpkin stand. He attended Columbia College in Chicago where he received a degree in political science and marketing. At age 19, he was sworn in as the youngest elected official in Illinois serving as Alderman in Prospect Heights.

"At an early age, my parents and grandparents taught me the value of hard-work, honesty and giving back. These are qualities that have remained an important part of my work and personal life," says Koeppen. "I am fortunate and blessed to work with an outstanding board of directors and a hardworking dedicated staff. They truly

add to the joy of my job," adds Koeppen.

Throughout Lake County, Koeppen is an active member of many organizations serving as Vice Chairman of the Lake County Zoning Board of Appeals, Director on the Visit Lake County Board & Grayslake Chamber of Commerce, Commissioner on the Grayslake Planning and Zoning Board and Chairman of the Grayslake Fire Commission.

"I would like to thank the Lake County Farm Bureau Board for not only hiring me 20 years ago, but for continuing to support and work with me on a variety of issues that help our farmer and non-farmer members," says Koeppen.

Please join us at the Farm Bureau Office for an Open House on Wednesday, March 7, 2018 from 11:30am-4pm as we recognize Greg for his 20 Years of Service with Lake County Farm Bureau!



2018 AITC Grant Recipients Named

The Lake County Farm Bureau's Agriculture in the Classroom program awarded fourteen grants to educators in Lake County who incorporate agriculturally based lessons into their classrooms. The AITC grants are available to all Lake County educators on an annual basis and can be used on books, classroom supplies, projects, and many other options as long as the activities integrate agriculture into the classroom.

The Lake County Farm Bureau would like to congratulate the following recipients of the Agriculture in the Classroom grants they were awarded for the 2017/2018 school year; Sandra Nelson, Washington School; Iga Pawlus, Washington Elementary; Mary Beth Anderson, Mechanic's Grove Elementary; John Heide-man, North Chicago Public Li-

brary; Keelan Goettsch, Sunrise Senior Living; Dana Bishop, St. Gilbert School; Kristin Lanzerotti, Wauconda High School; Christine Berek, SEDOL-Transition; Karim Ibrahim, Lyon Magnet; Mary Beth Hutting, SEDOL TAB class; Megan Richardt, North Prairie; Laura Brodsky, Palombi School; Jenness Stock, Washington Elementary; Tina Borges & Michelle Rappaport, Cyd Lash Academy, and Deirdra Jackson, Lakeview School.

In addition to funding in the form of grants, the AITC program also provides free classroom presentations, a variety of learning materials, teacher training opportunities, and much more! For more information about the AITC program contact Andy Blaul at 847-223-6506 or by email at ablaul@ameritech.net.



LCFB Annual Golf Outing • June 21, 2018

The Lake County Farm Bureau would like to invite you to enjoy a day of golf at this year's annual golf outing. This year's outing will be held on Thursday June 21 at Deerpath Golf Course in Lake Forest. The day will begin with an 11:00 a.m. shotgun start. Deerpath requires all golfers to wear proper golf attire (no tank tops or cutoffs), and everyone must use a cart, walking is not permitted.

This year's outing will have a 50/50 raffle, mulligans and other fun events. All proceeds from this event will benefit the newly created Mary Lou Diebold Memorial Scholarship. After golf is complete all participants will enjoy dinner on the outdoor patio and a drawing raffle prizes will take place.

Additional events include longest drive, closest to the pin, and longest putt competitions for both men and women.

Cost is \$55 per member and \$65 for non-members. This will cover the cost of green fees, cart and meal.

Please complete the form below and return along with your payment to Lake County Farm Bureau, 70 US Highway 45 Suite 120, Grayslake IL 60030.

If you have any questions, please contact Donna at 847-223-6506 or e-mail dfreitag@ameritech.net. **REMINDER:** Payment must be included with registration. SIGN UP FORM ON PAGE 3.

AARP Smart Driver Course

The Lake County Farm Bureau is pleased to announce that our organization will be hosting an AARP Smart Driver Course. This course is open to Lake County Farm Bureau members, and will take place on Tuesday March 20th, and Thursday March 22nd from 9:00 to 1:00. The two-day course will be held at the Lake County Farm Bureau office located at 70 US Hwy 45 in Grayslake. The AARP Smart Driver Course teaches valuable defensive driving strategies and provides a refresher of the rules of the road. Since 1979, the course has helped more than 15 million drivers learn research-based tips to adapt

their driving to compensate for physical and cognitive changes that may occur with aging. Plus, you may qualify for a multi-year automobile insurance discount by completing the course. (check with you COUNTRY Financial Representative for details)

The AARP Smart Driver Course is the nation's largest driver safety course, and is designed especially for drivers age 50 and older. By taking the AARP Smart Driver Course you will learn the current rules of the road, defensive driving techniques, and how to operate your vehicle more safely in today's increasingly challenging driving environment.

In addition you will learn:

- How to minimize the effects of dangerous blind spots
- How to maintain the proper following distance behind another car
- The safest ways to change lanes and make turns at busy intersections
- Proper use of safety belts, air bags, anti-lock brakes, and new technology found in today's vehicles
- Ways to monitor your own and others' driving skills and capabilities
- The effects of medication on driving
- The importance of eliminating distractions, such as eating, smoking, and using a cell phone

The cost of this course is \$15 for AARP members, and \$20 for non AARP members. If you would like to sign up to attend this two day course contact Information Director Andy Blaul by phone at 847-223-6506, or via email at ablaul@ameritech.net. Space for this program is limited, and capacity crowds were reached the last few times this course was held at the Farm Bureau, so reserve your spot today!



Document Destruction Day Scheduled

The Lake County Farm Bureau will be hosting a document destruction event on Saturday May 5th from 10:00 a.m. until 12:00 p.m. The event will be open to members of the Lake County Farm Bureau, and offers an opportunity to destroy files that may contain pertinent personal information.

The destruction of personal documents will be completed by Opportunity Secure Data Destruction, which is a company located in Northbrook. OSDD's certified document destruction ensures security, confidentiality and compliance with applicable regulatory guidelines for its clients.

Properly disposing of documents that contain personal information can ensure that you can be confident that sensitive items will not fall into the wrong hands.

All documents that are brought in will be shredded on site at the Lake County Farm Bureau office, which is located at 70 US Hwy 45 in Grayslake. The capacity of the shredding truck is 10,000 pounds, and all document destruction will be completed on a first come-first serve basis.

If you have any questions about this event, please feel free to contact Information Director Andy Blaul at 847-223-6506 or by email at ablaul@ameritech.net.



DIVERSIFIED FARMER

Published Bi-Monthly by
LAKE COUNTY FARM BUREAU INC.

Phone: (847) 223-6506
www.lcfb.com

USPS NO. 158-580
Periodical Postage Paid at
Grayslake, IL 60030-9998
and at additional offices.

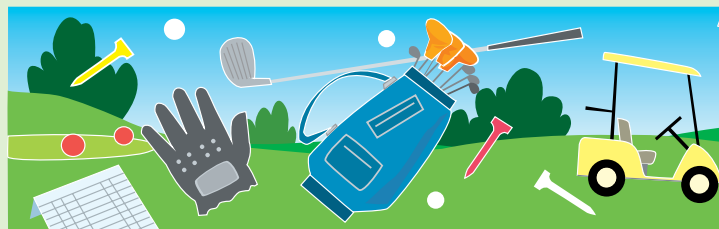
President Jerry Henningfeld
Vice President Duane Beelow
Secretary Rod Buss
Treasurer Tom Doolittle

DIRECTORS:

Dave Krueger, Pat Oaks,
Don Tekampe, Pete Tekampe,
Bill McNeill, Andy Yarc,
Bernie Weidner

Manager Gregory Koeppen
Executive Assistant Donna Freitag
Information Director Andrew Blaul
Membership Assistant Sue Squillacci

Postmaster-Mail form 3579 to:
70 US Highway 45, Ste. 120
Grayslake, IL 60030-2200
Subscription Price: \$2.00



Farm Bureau Golf Outing

Thursday, June 21, 2018
Deerpath Golf Course

SEE STORY ON FRONT PAGE

Name _____ Member Non Member

Cell Phone _____

Name _____ Member Non Member

Cell Phone _____

Name _____ Member Non Member

Cell Phone _____

Name _____ Member Non Member

Cell Phone _____

Email address _____

Please include payment with registration



2nd Annual Lake County Farm Stroll!

Sunday, Sept. 16, 2018

The Lake County Farm Bureau in partnership with the University of Illinois Extension and College of Lake County would like to invite you to come out for the second annual Lake County Farm Stroll! This event will take place on Sunday, September 16, 2018, and will feature many local agribusinesses that will open their doors to the public. Watch for updates in upcoming issues of the Diversified Farmer!



Wednesday, Sept. 26, 2018
 The Lake County Farm Bureau would like you to "Save The Date" as we celebrate our 104th Anniversary during our **2018 ANNUAL MEETING** on Wednesday, Sept. 26, 2018 at the Marriott Linconshire Resort. The meal and dinner price will be \$15 each once again this year! Watch for the official registration form in future editions of the Diversified Farmer.

- Upcoming trips:**
- America's Canyon Country** June 21-29, 2018
 - Lake Michigan Summer Harvest** July 31-Aug. 2, 2018
 - Colorado's Historic Trains** Sept. 14-22, 2018
 - Cranberry Autumn Harvest** Oct. 9-11, 2018
 - Tournament of Roses Parade** Dec. 30, 2018 - Jan. 3, 2019
 - Hawaiian cruise** April 17-29, 2019
- If you have any questions or would like a copy of any of the trip brochures, please contact Donna Freitag at 847-223-6506 or dfreitag@ameritech.net.

FRIENDS OF AGRICULTURE

The Lake County Farm Bureau Board of Directors is asking for help in nominating "Friends of Agriculture" to be recognized at our annual meeting in September.

Farm Bureau members are being asked to nominate other members, businesses, organizations, etc. who have helped to advance local agriculture in Lake County.

Past recipients include: Conserv FS, Grayslake Feed Sales, Pedersen Bros. Implement, Schmidt Implements, George Freund, Elbert Elsbury Family, Orion Samuelson, past presidents of LCFB, and many more

If you would like to nominate an individual or organization for this year's Friend of Agriculture award please contact the Lake County Farm Bureau office at 847-223-6506.

Lake Michigan Summer Harvest Trip

The Lake County Farm Bureau would like to invite you to attend a trip which will explore around Lake Michigan during Summer Harvest time. The trip will take place Tuesday July 31, 2018 through Thursday August 2, 2018, and will feature six meals, deluxe motorcoach transportation, hotel accommodations for two, and three relaxing days of touring sites around Lake Michigan in Wisconsin and Michigan.

Some of the stops included with this trip are:

- A four hour cruise across Lake Michigan

- Mac Woods Dune Rides
 - A visit to Little Stable Lighthouse
 - Gilmore Car Museum
 - Picking blueberries at DeGrandchamps Blueberry Farm
 - Tree-mendous Fruit Farm visit
 - Much more!
- Cost of the trip is \$998/per person for double occupancy, or \$1,198 in a single room.
- This trip is being organized through American Classic Tours, and will be filling up quickly. There will be an informational meeting about this trip announced

in a future issue of the Diversified Farmer.

For a complete overview of the trip, or for additional information on this please visit www.lcfb.com.



Backyard Chickens 101 Class Announced

The Lake County Farm Bureau is pleased to offer an informational class that will deal with the keeping of and caring for backyard chickens. Kerri Gburek, a local "eggspert", will introduce attendees to the basics of keeping chickens. Topics will include; chicken selection, housing and coop options, space requirements, nutrition and feed, medical needs, predator protection, and much more!

Kerri will present the following class at the Lake County Farm Bureau office in Grayslake:

Backyard Chickens 101
Saturday, April 7, 2018
10:00 a.m. - noon

The class instructor, Kerri Gburek "The Chicken Eggspert", will share her hands on experience from raising chickens. In addition to classes such as Backyard

Chickens 101, Kerri also offers a "Pop Up Poultry" program where they deliver a coop with two egg-laying hens along with everything needed for six months of taking care of the birds. This includes coop, feed, bedding, medical supplies, and perhaps most important of all the guidance of those experienced with raising chickens!

This class has no cost, but pre-registration is required to attend. Space is limited, and the last class filled with a wait list of people who wanted to attend, so if you would like to sign up for this egg-citing learning opportunity contact LCFB Information Director Andy Blaul at 847-223-6506 or via email at ablaul@ameritech.net. For additional information about the course, or for more info on the "Pop Up Poultry" program feel free to contact Kerri Gburek at farmers@3chicksfarms.com or via phone at 847-809-8240.

FARM BUREAU Family Bowling

Sunday, March 11, 2018 Children & Seniors FREE! One FREE Pizza on each lane!

The Lake County Farm Bureau would like to invite you to join us for our annual Family Bowling event at Bertrand Lanes in Waukegan.

All bowlers are eligible to receive free drink vouchers whenever they get a strike during special red pin rounds when a special red pin is randomly placed in the #1 pin spot. In addition to the opportunity to win free drinks, while enjoying discounted bowling, the Lake County Farm Bureau will also be buying each lane a pizza to enjoy during the event!

Bowling is set to begin at 1:00pm and will feature three games of bowling for each participant, as well as shoe rentals for each participant, all for the bargain price of \$5 per member! Children of members 13 and under bowl for FREE, and members 65 and over participate for FREE as well! Non-members are welcome to participate at the event for \$10, but are not eligible to win any of the gift card prizes.

Please complete the entry form at left and return to the Farm Bureau office by Friday February 16th. Space for the event is limited, and spots at the event will be given out based on when entry forms are received. Lanes

will be assigned prior to the event, so please inform us if you have friends you would like to bowl with. If you have any questions

please feel free to contact Information Director Andy Blaul at 847-223-6506, or by email at ablaul@ameritech.net.

Farm Bureau Family Bowling

SUNDAY, MARCH 11

Name/Age _____

Name/Age _____

Name/Age _____

Name/Age _____

Daytime Phone Number _____

Email Address _____

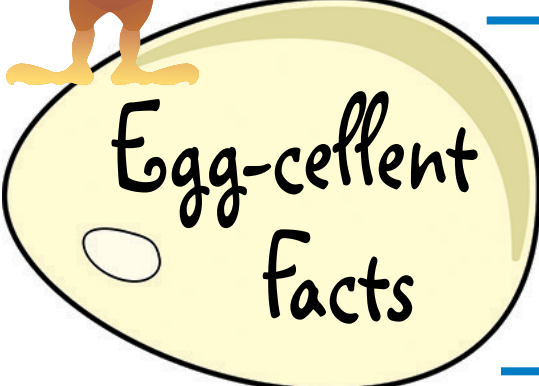
*\$5.00 Participation Fee for members collected at alley for members
 Children of members 13 and under bowl for FREE.
 Farm Bureau members 65 and over bowl for FREE.
 \$10.00 Participation Fee for non-members collected at alley.
 Please return entry form by Friday, Feb. 16, 2018 to:
 Lake County Farm Bureau, 70 US Hwy 45, Grayslake, IL 60030*

AG in the CLASSROOM



Turkey Trivia

- A turkey under sixteen weeks of age is called a fryer, while a young roaster is five to seven months old.
- Most domestic turkeys are so heavy they are unable to fly.
- A turkey has 157 bones!
- Turkey eggs hatch in 28 days. A baby turkey is called a "poult."
- Gobbling turkeys can be heard a mile away on a quiet day.



- Eggs can come in a variety of shades. The most common are brown and white but you can also find chicken eggs in shades of pink, green, and blue!
- The average laying hen lays 257 eggs a year.
- An egg starts growing into a chick when it reaches a temperature of 86 degrees Fahrenheit.
- The most amount of yolks per egg on record is 9! (It would be awfully crowded with 9 chicks in one egg!)
- A hen starts laying eggs at 19 weeks of age.
- As a hen grows older she produces larger eggs.

POULTRY WORD SEARCH

T M Z R S L E I A R H S G H A A F F
 S U E G O C R N D S R O C G D A A C
 V O L O S I I E A J V H E S D C U H
 P Q A F F O E F G N O H T A Z G G W
 W S A U P R L J I G D K I L R O N W
 C E A U F T A O P N L L I A L P S E
 O I L I O R N B P O D A O M A S V P
 T W Z I C W Y H Y E U X D E T K Z A
 S R C C Z E G E S Q C L G T C E E J
 O B G V S O S Z R K K R T U Q I H X
 E C L O R O T F I H E N L R D N M R
 M S O Z B T I G T R A C C K Y O E S
 A G E I L B R O A S T E R E K I O S
 S K S F P D L D A R E E L Y J K Q Z
 S E T O R O L E G H O R N Q E P A T
 H H B A U C H I C K E N J K E G W O
 R X T N O P I F P T G N V V J E G I
 R P P T E J S N I C C A O J V C A V

FIND THESE HIDDEN WORDS
 CHICKEN, TURKEY, EGG, GOBBLE, FRYER, ROASTER, YOLK, CLUCK, POULTRY, PHEASANT, DUCK, HEN, QUAIL, GOOSE, LEGHORN

JOKES

- Q:** What do you call a rooster who wakes you up at the same time every morning?
A: An alarm cluck!
- Q:** How does a chicken mail a letter to her friend?
A: In a HEN-velope
- Q:** What do you call an egg that goes on a safari?
A: An eggs-plorer!
- Q:** What time do chickens go to lunch?
A: Twelve o' cluck
- Q:** What do you get when a chicken lays an egg on top of a barn?
A: An egg roll!

EGG CONSUMPTION

Did you know that each person eats approximately 250 eggs per year? Although this sounds like a lot, it's much less than the average amount of eggs that were consumed per person in 1945, which was 402 eggs. Many changes have taken place over the years to cause this drop. Two-income families, mothers working outside the home, more people skipping breakfast, over 30,000 items to choose from at the grocery store, and lifestyle changes have all affected the egg consumption rate.



CONTEST RULES: CHILDREN AGES 12 AND UNDER!

Complete and return the Word Search puzzle and you could win Two Movie Tickets! Find all of the hidden words, return the puzzle along with the contest entry form by **Friday, March 16** and you'll be entered in that month's drawing.

MAIL TO: Lake County Farm Bureau, AITC, 70 US Highway 45, Grayslake, IL 60030



Contest Entry Form

NAME: _____
 ADDRESS: _____
 PHONE: _____ AGE: _____



Prime Time Travelers Calendar

FOR THOSE 55 AND OVER

THURSDAY, FEB. 8th, Luncheon at the University of Illinois auditorium from noon to 2 p.m. For lunch we will enjoy Polish Sausage & Sauerkraut, Mashed Potatoes, Corn, Three Bean Salad, Rye Bread and Kolacky for dessert. Carla Wychoff of the Lake County Clerk's office will be making a presentation. To RSVP please call 847-223-6506 no later than **Friday, February 2nd.**

THURSDAY, MARCH 8th, Luncheon at the University of Illinois auditorium from noon to 2 p.m. For lunch we will enjoy Corned Beef & Cabbage, Baby Red Buttered Parslied Potatoes, Jello w/fruit, Rye Bread, and Mini Eclairs for dessert. Jillian McClain, RTA Transit Presentation, options for travel independence on CTA, Pace, and Metra. To RSVP please call 847-223-6506 no later than **Friday, March 2nd.**

THURSDAY, APRIL 12th, Luncheon at the University of Illinois auditorium from noon to 2 p.m. For lunch we will enjoy Marinated, Char-Broiled Chicken Breast, Cheesy Au Gratin, Mixed Veggies, Hawaiian Salad, Wheat Rolls, and 7-Layer Bars for dessert. Vanessa Cisneros, Case Manager, for Catholic Charities will give an overview of their services for seniors. To RSVP please call 847-223-6506 no later than **Friday, April 6th.**

Farm Bureau Public Relations/Marketing Internship Available

The Lake County Farm Bureau will once again be offering the opportunity for a summer internship in 2018. Applicants should be pursuing an undergraduate degree in public relations, marketing, advertising, agribusiness or a related field. Knowledge of Microsoft Office programs is required, and the ability to create PowerPoint presentations or the ability to use other presentation software would be helpful. Good communication and organizational skills are required, and an agricultural background would be helpful, but is NOT required.

The student who is named as this year's intern will be responsible for working with Information Director, Andy Blaul on a variety of projects that include but are not limited to, the annual Educator Agventure, the Lake County Fair

"Ag Adventure", production of the Lake County Farm Bureau's publication the *Diversified Farmer*, the maintenance and upkeep of the LCFB's website, the second annual Lake County Farm Stroll, and other duties as they arise over the course of the internship.

The internship offered by the Lake County Farm Bureau offers the availability to earn college credit through their respective University or Junior College, if it is an option offered by their learning institution. In addition, this year's intern will receive a \$1,500 scholarship upon completion of the program. This scholarship can be used toward tuition or the purchase of textbooks. The scholarship award is contingent upon the intern working between 20-25 hours a week from late May through early August.

The Lake County Farm Bureau's internship program has been very successful over the years and has helped provide students who are majoring in the above mentioned fields with employment experience that is always viewed as a positive addition to any graduate's resume.

Individuals who are interested in this internship opportunity should contact Information Director Andy Blaul at 847-223-6506 or by email at ablaul@ameritech.net for more information or to obtain an application and detailed job description. Applications must be returned to the Lake County Farm Bureau office at 70 US Hwy 45 in Grayslake by 3 p.m. Friday April 13, 2018.

Interviews for the position will be scheduled based on each applicant's availability.



Colorado's Historic Trains Trip

(Featuring Five Scenic Rail Excursion and Three National Parks)

The Lake County Farm Bureau would like to invite you to attend a trip which will explore Colorado's Historic Trains. The trip will take place Friday September 14, 2018 through Saturday September 22, 2018, and will feature thirteen meals, round trip airport transfers, hotel accommodations for eight nights, and nine exciting days of touring five scenic rail excursions following historic routes of the Old West!

Some of the stops included with this trip are:

- Arkansas River Valley
- Durango & Silverton Narrow Gauge Railroad, voted on the "Top Ten Most Exciting Rail Journeys in the World"
- A ride through the Rockies aboard the Cumbres & Toltec Scenic Railroad

- The Royal Gorge Route Railroad across the famous Hanging Bridge
- Climbing 7,539 feet on the Pikes Peak Cog Railway
- Visit the beautiful Rocky Mountain National Park
- Tour Mesa Verde National Park
- Visit the Black Canyon of Gunnison National Park
- Visit the U.S. Airforce Academy and Cadet Chapel
- Drive through Garden of the Gods Park

Cost of the trip is \$3,139/ per person in a twin room, or \$3,948 in a single room. This trip is being organized through Mayflower Tours, and will be filling up quickly.

For a complete overview of the trip, or for additional information on this please visit www.lcfb.com.

**For your fine taste in farm fresh meat!
Top-quality farm-fresh beef and pork.**

MEAT BUNDLES

PRICES INCLUDE SALES TAX

QUEEN BEEF BUNDLE - \$245

- One Top Round Roast (3+ lbs)
- One Boneless Chuck Roast
- Two Top Butt Steaks
- Four T-Bone Steaks
- Two Top Round Steaks (1" thick)
- One Chuck Roast
- Ten - 1 lb pkgs Ground Chuck (95-97% lean)
- Two - 3 lb pkg Patties

GOURMET GRILL PAK - \$280

- Six - 10 oz Ribeye Steaks
- Eight - 10 oz New York Strip Steaks
- Six - 16 oz T-Bone Steaks
- Two Slabs Pork Loin Back Ribs
- Two - 2 lb pkgs Patties

MID SIZE BEEF BUNDLE - \$240

- Ten - 1 lb pkgs Ground Chuck
- Two Rib Steaks
- Four T-Bone Steaks
- Two Top Butt Steaks
- Two Top Round Steak (1" thick)
- One Chuck Roast
- One Boneless Chuck Roast
- One Sirloin Tip Roast
- Two Tri Tip Roast

Meat bundles exclusively for Lake County Farm Bureau members from Tony's Butcher Shop, Grayslake.

FREEZER PLEEZER - \$170

- 5 lb Chicken Cutlet
- Five - 1 lb pkgs Ground Chuck
- Three lb bacon
- Two - 3-4 lb Sirloin Roast
- Four - 10-12 oz Ribeye Steaks
- Four - 10-12 oz Strip Steaks

MINI FREEZER BUNDLE - \$95

- Four ½" Pork Chops
- Four Cubed Steaks
- Three - New York 10-12 oz
- One - 1 lb pkg Pork Sausage Links
- One Boneless Pork Loin Roast
- One Sirloin Tip Roast
- Two - 1 lb pkgs Ground Chuck

COUNTRY STYLE GRD CHUCK - \$43

- 12 -1 lb pkgs Lean Ground Chuck

GROUND CHUCK PATTIES - \$30

- 6 lb box 1/3 lb patties (18 patties)

BONELESS PORK CHOP BOX - \$37

- Ten - 1" Chops
- Pork Roast

SAUSAGE - \$55

- Two - 1 lb pkgs Bulk Pork Sausage
- Two - 1 lb pkgs Pork Sausage Links
- One pkg of 6 Italian Sausage
- One pkg of 6 Pork Dogs
- One pkg of 6 Bratwurst
- One Pkg of 6 Hot Italian
- One pkg of 6 Calabrese

**CALL 847-223-6506 TO ORDER
ORDER DEADLINE: MONDAY, MARCH 12 - PICKUP: TUESDAY, MARCH 27**

BUSINESS TO MEMBER PARTNERS

ANTIOCH

Raymond Chevrolet
847-395-3600
\$10 off any service \$30 or more

DEERFIELD

The Mulch Center
847-459-7200
10% off of all manufactured products

FOX LAKE

Fox Lake Toyota
847-587-9200
10% Discount on any service up to \$100 maximum

GRAYSLAKE

1 Plumbing Company
847-990-0335
5% discount on all water heaters, major/minor plumbing needs, remodels and more

Alwin Anthony Salon & Express Spa
847-223-1100
\$15 off for new guests. \$10 off any nail or airbrush tan service for existing guests

Bake's Restaurant
847-223-3430
30% off food Mondays & Sundays

Better Homes & Gardens Real Estate Star Homes
847-548-2625
Free seller home warranty during the period home is listed for sale with our office - \$675 value

Comfort Suites Grayslake
847-223-5050
20% discount rate with advance reservation required

Equity Minder, LLC
847-515-5031
Financial software program to enjoy debt-free lifestyle \$647 (suggested retail value is \$1,297)

Lewis Florist
847-223-6600
10% off flowers or gifts. *Not on delivery

Medleys In Motion
847-231-4577
\$100 discount on a wedding package of \$995

R.E. Allen & Associates, Ltd.
land surveying
847-223-0914
10% discount

Rock Chevrolet
847-223-2234
10% off service work or parts purchase

Rudolph's Furniture
847-223-5497
10% off sale prices *Clearance items 5% off

Salon Luxe
847-223-6665
25% off Chemical Services, colors, highlights, perms - first time only clients
**Must mention ad

The UPS Store
847-231-5680
Color copies @ .19 8.5 x 11 single sided Black/White @.04 8.5 x 11 single sided

GURNEE

Jamie Angela Salon
(Formally Salon Le Beau)
847-625-9722
½ off Cut and Style or \$25.00 off color *First time clients only.

Hearing Associates
847-662-9300
Free screening and 10% discount off a two device hearing system
**Must mention ad

HARVARD

3 Chicks Farms
815-345-3978
\$25 off season of Pop Up Poultry Program (Regular price \$400)

LAKE BLUFF

The Mulch Center
847-578-0100
10% off of all manufactured products

LAKE VILLA

All-Star Heating & Cooling
847-641-1200
\$200 off new a/c for furnace system or \$20 off a service call

Leaving Lightly
203-525-5090
Education on end-of-life planning. 10% off all products and services.

V. Olsen Heating & Air Conditioning, Inc.
847-356-3581
\$25 off any scheduled service call

LIBERTYVILLE

C & A Robot Factory
847-996-0123
20% off day play, 15% off all other services excluding retail merchandise

Fastsigns of Libertyville
847-680-7446
10% off any in-house product or service

Fine's
847-367-1978
Fast Casual Restaurant
Free fries or side salad with purchase

Hansa Coffee Roasters
847-226-8815
10% off any purchase

Hearing Associates
847-662-9300
Free screening and 10% discount off a

two device hearing system
**Must mention ad

MUNDELEIN

Taylor Rental Center
847-949-0500
10% off any rental up to \$50.00

PALATINE

Keller-Williams
847-341-4376
Ron Rank - 20% off the listing commission

ROUND LAKE BEACH

Buffalo Wild Wings
847-546-8366
\$5.00 off purchase of \$25.00 (alcohol not included)

The Lean Solution
224-430-1918
50% off 1st three months coaching fee. 1st consultation is free.

THIRD LAKE

Sarpino's Pizzeria
847-223-5000
10% discount for members

VOLO

The Mulch Center
847-459-7200
10% off of all manufactured products

WAUKEGAN

Pope's Florist, Ltd.
847-263-7673
\$5.00 off any in store purchase of \$25 or more, excluding wire transfers

WILDWOOD

Warren Electric
847-223-8691
Lighting fixtures in stock only additional 10% discount



Local Discount Provider Spotlight!

Every issue of the Diversified Farmer will now feature a business partner from our Business to Member discount program. Be sure to visit our website www.lcfb.com for info on all of the savings/discounts available through the B2M program!

THIS ISSUE'S LOCAL BENEFIT PROVIDER IS...



Discount provided to LCFB members with valid Illinois Farm Bureau membership card:

10% OFF ANY RENTAL UP TO \$50

Visit Amish Country



Lake County Farm Bureau members are invited to join our trip to Shipshewana, Indiana on **Tuesday, June 12, 2018**. A coach bus will depart from the Lake County Farm Bureau office at 6:00 a.m. for the 165 mile trip to Amish Country. We will have a movie for your enjoyment on the bus.

Once we arrive, participants will have the opportunity to begin touring the shops and flea market.

At 11:00 am, a traditional family style Amish meal will be served at the Blue Gate Restaurant. Meal includes meat, potatoes, dressing, vegetables, salad, bread and your choice of pie. Meal is included in the cost of the trip.

After lunch, participants will have an opportunity to continue shopping and visit the flea market. Those looking for a little more adventure may opt to take a carriage ride around town, tour one of the many quilting, candle making or furniture shops or just relax under a shade tree in the center of town.

We will board the bus heading back to Lake County at 4:00 p.m., watch another movie and hopefully arrive back at the Farm Bureau by 7:30 p.m.

The cost of this trip for Lake County Farm Bureau members is \$55. If you would like to bring a friend that is not a Lake County Farm Bureau member, the cost for their trip is \$65.

Registration and payment are due at the Farm Bureau office by Tuesday, May 29. The trip will take place, rain or shine, so please dress for the weather. If the trip is cancelled for any reason, you will receive a full refund. Otherwise, payment is non-refundable. Please mail payment and coupon to LAKE COUNTY FARM BUREAU, 70 US HIGHWAY 45 SUITE 120, GRAYSLAKE IL 60030.

If you have any questions, please contact Donna Freitag at 847-223-6506. Please visit www.shipshewana.com for further information on Shipshewana, Indiana. **ALL TIMES LISTED ARE CENTRAL TIME!!!**

Shipshewana Tuesday, June 12

Name _____ Member Non Member

Name _____ Member Non Member

Name _____ Member Non Member

Name _____ Member Non Member

Address _____

City _____

State _____ Zip _____

Phone Number _____

Email _____

2018 Educator Agventure Announced

Calling all Teachers! Have you ever wanted to learn about what types of agricultural production takes place right here in the Northeastern corner of Illinois? Have you ever driven by a field of crops in Lake County and wondered what was being grown there, and what are the end uses of that crop? How many dairy farms are there in Lake County? What else is grown in this area other than corn? Would you like to learn about these topics and much more while earning CP-DUs or grad credit? If so, the Lake County Farm Bureau's Educator Agventure is a perfect opportunity for you this summer!

The Lake County Farm Bureau is pleased to announce that

this year's educator field trip will be taking place July 9th-12th. The trip features three days of touring local agribusinesses in Lake, Cook, and McHenry Counties, and is finished off with a day at the Farm Bureau office that features free learning materials and ideas on how teachers can incorporate agriculture into their lessons. The three touring days of the trip typically start at around 8:00, and end around 6:00. The fourth and final day begins around 9:00, and ends at about 3:00.

The Lake County Farm Bureau holds an Educator Agventure each summer with the hopes that teachers will gain first-hand knowledge about agricultural production

which they can then take back to their classrooms to share with their students. In addition to providing the first-hand experience, teachers who attend the educator field trip also receive numerous learning materials and lesson plans.

The \$25 registration fee for the trip includes the costs of traveling on a motor coach as a group on the three touring days of the trip, four lunches, one dinner, snacks, water, learning materials, and touring fees at some locations!

If you are interested in attending this year's trip, or have any questions please contact Information Director Andy Blaul at 847-223-6506 or via email at ablaul@ameritech.net.

2018 Chicago Flower Show Trip THURSDAY, MARCH 15, 2018

The Lake County Farm Bureau invites you to join us for a day of beauty, color and splendor at the 2018 Chicagoland Flower & Garden Show being held at Navy Pier in Chicago.

The roots of the Chicago Flower & Garden Show can be traced as far back as 1847! The show, held each March at Chicago's Navy Pier (March 14-18, 2018), is an experience for the senses, invoking memories of spring after a typically long and cold Chicago winter.

The five-day event will feature 20+ life-sized gardens that you can walk through, daily seminars, DIY workshops and a bustling marketplace. Perfect for families, gardening veterans and newbies, the 2018 Chicago Flower & Garden Show will be an event filled with hands-on experiences and non-stop fun. So join us this March as we inspire, motivate and educate visitors of all ages with "Chicago's Blooming."

From the intricately designed lush themed-gardens of the mid-way, to hands-on demonstrations and in-the-soil workshops, to realistic garden displays that can translate into your own yard or balcony and educate you about sustainable and achievable results, you will find Chicago's first brush with spring to be invigorating.

So whether you are a beginning gardener seeking information on what plants work well in the sun or shade, or a frustrated gardener who needs some help taking things to the next level, or a horticultural aficionado who is looking for what's new and trendy

in landscape design and horticulture, you'll find it all at the Chicago Flower & Garden Show.

Cost of the trip is \$35 per member and the cost for non members is \$40. We will depart the Farm Bureau at 9:00 a.m. and plan to

return around 5:30 p.m. If you would like to join us, please complete the form adjacent and return along with your check payable to the Lake County Farm Bureau, 70 US Hwy 45 in Grayslake IL 60030.



2018 Flower Show THURSDAY, MARCH 15

Name _____ Member Non Member

Name _____ Member Non Member

Name _____ Member Non Member

Name _____ Member Non Member

Address _____

City _____

State _____ Zip _____

Phone Number _____

Email _____

Return this form along with your check payable to the Lake County Farm Bureau, 70 US Hwy 45 in Grayslake, IL 60030



Lake County Agency

AUTO | HOME | LIFE | BUSINESS | RETIREMENT



Matt Bruner (847) 231-1152
1512 Artaius Pkwy., Ste. 102
Libertyville, IL 60048
Fax (847) 548-2140



Burt Hurley (847) 362-9560
1230 Allanson Road
Mundelein, IL 60060
Fax (847) 362-1439



Susan Peterson (847) 231-1156
1190 E Washington St.
Grayslake, IL 60030
Fax (847) 548-3401



Tom Charniak (847) 973-9900
37 E Grand Ave., Ste. 102
Fox Lake, IL 60020
Fax (847) 973-0300



Glenn Jackson (847) 838-4100
1478 Main St., Antioch, IL 60002
Fax (847) 838-2905



Mark Price (847) 543-9100
1512 Artaius Pkwy., Ste. 102
Libertyville, IL 60048
Fax (847) 548-2140



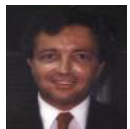
Jason Coroneos (847) 865-5441
1512 Artaius Pkwy., Ste. 102
Libertyville, IL 60048
Fax (847) 548-2140



Frank Kalinoski (847) 543-6700
70 S Route 45, Suite 205
Grayslake, IL 60030
Fax (847) 543-4500



Christine Seiler (847) 548-0346
70 S Route 45, Suite 200
Grayslake, IL 60030
Fax (847) 548-5584



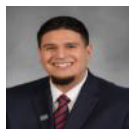
Wayne Criswell (847) 362-7900
1880 W Winchester Rd., Ste. 108
Libertyville, IL 60048
Fax (847) 362-4606



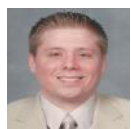
Sanjay Kantharia (847) 566-9296
70 S Route 45, Suite 205
Grayslake, IL 60030
Fax (847) 543-6820



Ray Simnick (847) 231-1186
1190 E Washington St.
Grayslake, IL 60030
Fax (847) 548-3401



Joe Delgado (847) 231-1187
1190 E Washington St.
Grayslake, IL 60030
Fax (847) 548-3401



David Keller (815) 455-7082
820 E Terra Cotta, Suite 236
Crystal Lake, IL 60014
Fax (815) 455-7083



Scott Ringler (847) 231-1202
1190 E Washington St.
Grayslake, IL 60030
Fax (847) 548-3401



Tim Dydo (847) 362-7900
1880 W Winchester Rd., Ste. 108
Libertyville, IL 60048
Fax (847) 362-4606



Ed Macek (847) 395-4100
906 Hillside, Antioch, IL 60002
Fax (847) 838-2797



Adam Smith (847) 231-1155
1190 E Washington St.
Grayslake, IL 60030
Fax (847) 548-3401



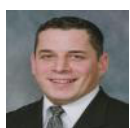
Scott English (847) 245-0082
305 S Granada Blvd., Suite 2
Lindenhurst, IL 60046
Fax (847) 265-0847



Sheila MauritzShort (847) 231-1154
1190 E Washington St.,
Grayslake, IL 60030
Fax (847) 548-3401



Brant Spreitzer (815) 356-1071
120 N Walkup Ave.
Crystal Lake, IL 60014
Fax (815) 356-1291



Robert Geraghty (847) 438-4915
444 S Rand Road, Suite 304
Lake Zurich, IL 60047
Fax (847) 438-4351



Mark Mirczuk (847) 438-3983
444 S Rand Road, Suite 304
Lake Zurich, IL 60047
Fax (847) 438-4351



David Steffenhagen (847) 356-0080
31 Cedar Ave., P.O. Box 880
Lake Villa, IL 60046
Fax (847) 356-0246



William Giztke (847) 548-5572
70 S Route 45, Suite 200
Grayslake, IL 60030
Fax (847) 548-5584



Paul Moskvitin (847) 367-5474
1230 Allanson Road
Mundelein, IL 60060
Fax (847) 362-1439



Mark Steggerda (847) 395-7054
1478 Main St., Antioch, IL 60002
Fax (847) 838-2905



Steve Goglin (847) 244-8100
3575 Grand Ave., Ste. G
Gurnee, IL 60031
Fax (847) 244-0900



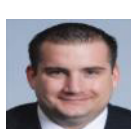
John Murphy (847) 865-5483
21 Howard Ave., Roselle, IL 60172
Fax (630) 582-4140



Alex Villa (847) 231-1151
1190 E Washington St.,
Grayslake, IL 60030
Fax (847) 548-3401



Craig Hunter (847) 265-0834
305 S Granada Blvd., Suite 2
Lindenhurst, IL 60046
Fax (847) 265-0847



Brett Ostertag (847) 245-9964
31 Cedar Ave., P.O. Box 880
Lake Villa, IL 60046
Fax (847) 496-3010



Joe Weiler (847) 223-9900
70 S Route 45, Suite 210
Grayslake, IL 60030
Fax (847) 223-9832

You can also call 1-866 COUNTRY (268-6879) or visit countryfinancial.com